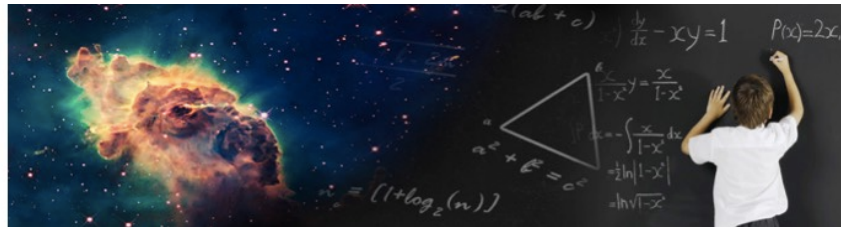


Thank you for your interest in Task Cards – Biology: Cells and Body Systems. Please scroll down to read a description and learn more about how the resource can be used. I guarantee you and your students will love it, mine do!

Thank you very much for your interest in my product!

If you'd like to receive 50% off your next TeachWithFergy purchase, (includes your entire shopping cart) please copy and paste the following link into your browser. It will simply take you to a page I use to host the coupon.

<https://teachwithfergy.leadpages.co/product-discount/>



Task Card Review Game

Instructions

- Students get into groups of two
- Task cards are divided into sets of five where questions #1-5 make up one set, #6-10 a second, etc.
- Place task cards around the room randomly (i.e. # 1 shouldn't necessarily be near #2)
 - o Note – the game works better if you print multiple copies of each Task Card to place around the room so the stations don't get too crowded.
- Each group is given a task card set to work on first (i.e. Group 1 starts on task card set 1, etc.)
- Students disperse, find their questions and answer them on a separate piece of paper
- The challenge of the game is to have your students match their answer with the corresponding word on the **Task Card Review Game Word Chart**. I usually put the chart up on an overhead projector as well as print and post it around the room.

Example - Task Card Review Game Word Chart

Answer	Word	Answer	Word
3	Hello	45	World
19	here	14	I'm

- Once they have completed each task card and put their words in the correct order (Word from Question 1, Word from Question 2, etc.) they will create a quote

i.e. the answer to #1 is 3 and its word is Hello, #2 is 45 = World, #3 is 14 = I'm, #4 is 19 = here. Your students would put the words together and get "Hello World I'm here"

- The group then brings their quote to the teacher who checks for correctness. If correct, they are assigned a new task card set.

Once the group has completed each task card set and put together the quote, they are the winner.

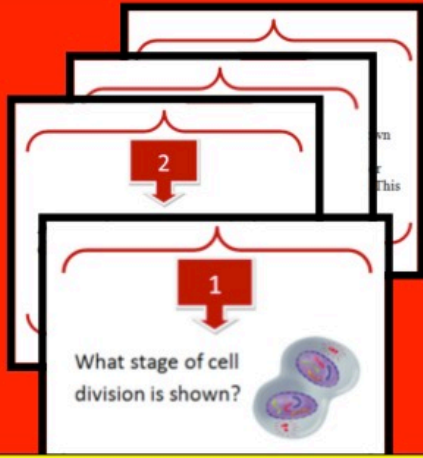
Simple Task Card Review

- For typical review, you can simply distribute the Task Cards to your class for individual, group or whole class review
- The cue cards can be projected on the board for whole class review
- The cards work well as cue cards, test review, math workshops, etc.
- A student worksheet as well as teacher answer key are provided

- Topics include:
 - function of various cellular organelles
 - cellular respiration
 - photosynthesis
 - mitosis
 - respiratory system
 - circulatory system
 - digestive system
 - specialized cells and tissues
 - organs and organ systems
 - plant cells
 - cell theory

**Biology: Cells and Body Systems
Task Cards and Review Activity Sample**

This 25 Biology Task Card Resource is unique. It can be utilized in a clue gathering, puzzle solving, highly active and engaging activity or as an alternative to worksheet review.



FREE SAMPLE

Student Answer Sheet

1 -	11 -	21 -
2 -	12 -	22 -
3 -	13 -	23 -
4 -	14 -	24 -
5 -	15 -	25 -
6 -	16 -	
7 -	17 -	
8 -	18 -	
9 -	19 -	
10 -	20 -	

Teacher Answer Key

When playing the Task Card Review Game, the quote that should be completed once all the Task Card Sets are complete is –

"There are two possible outcomes: if the result confirms the hypothesis, then you've made a measurement. If the result is contrary to the hypothesis, then you've made a discovery." --Enrico Fermi

1 - Control cellular actions	11 - Transport substances around the cell	21 -
2 - Glucose + O ₂ → CO ₂ + Water + Energy	12 - Nerve	22 -
3 - Metaphase	13 - Prophase	23 -
4 - Larynx	14 - Emphysema	24 -
5 - deoxygenated, lungs	15 - Secrete insulin	25 -
6 - Collect and process materials within the cell	16 - Create energy for the cell	
7 - Muscle	17 -	
8 - Anaphase	18 -	
9 - oxygenated, heart	19 -	
10 - elastic with muscular walls.	20 -	

1

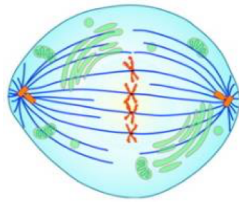
What is the function of the nucleus?

2

What is the formula for cellular respiration?

3

What stage of cell division is shown?



4

Where are the vocal cords located?

5

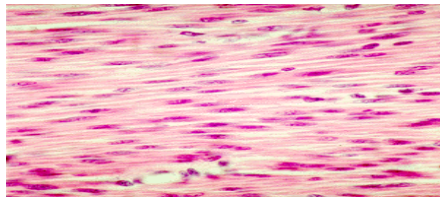
The pulmonary arteries carry _____ blood to the _____.

6

What is the function of Golgi Bodies?

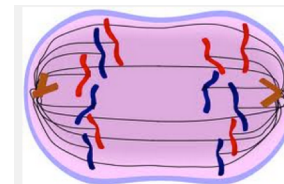
7

What kind of tissue type is shown?



8

What stage of cell division is shown?



9

Coronary arteries carry
_____ blood to the
_____.

10

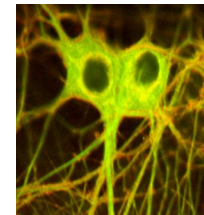
Good arteries are

11

What is the function of the
ER?

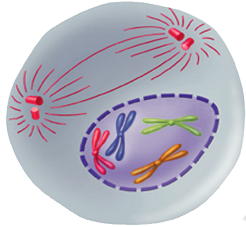
12

What kind of tissue type is
shown?



13

What stage of cell division is shown?



14

Which disease is characterized by a deterioration of the alveoli walls?

15

What is the function of the Pancreas?

16

What is the function of Mitochondria?

Part 2 - Task Card Review Game Word Chart Preview

Thank you for your interest in Biology Task Cards. I hope you have enjoyed Part 1 and feel it can be incorporated easily and effectively in your classroom. Part 2 utilizes the Task Cards in a different way. All Task Card Answers are connected with a certain word (clue). Once the group solves a Task Card, they will use the answer to identify the associated word (clue) to gain a part of the puzzle (sentence). Once all the clues are discovered, your students will put them together to solve the puzzle (complete the quote). Below is a portion of the Answer-Clue Chart.

If you are interested in purchasing the full resource, please visit [My Store](#).

Task Card Answer	Word (Clue)	Task Card Answer	Word (Clue)	Task Card Answer	Word (Clue)
Pneumonia	Francis	Secrete insulin	result is	weak with valves.	theory
Collect and process materials within the cell	if	Connective	are	Prophase	Measurement.
Asthma	entirely	an organism.	of Saturn	deoxygenated, heart	of