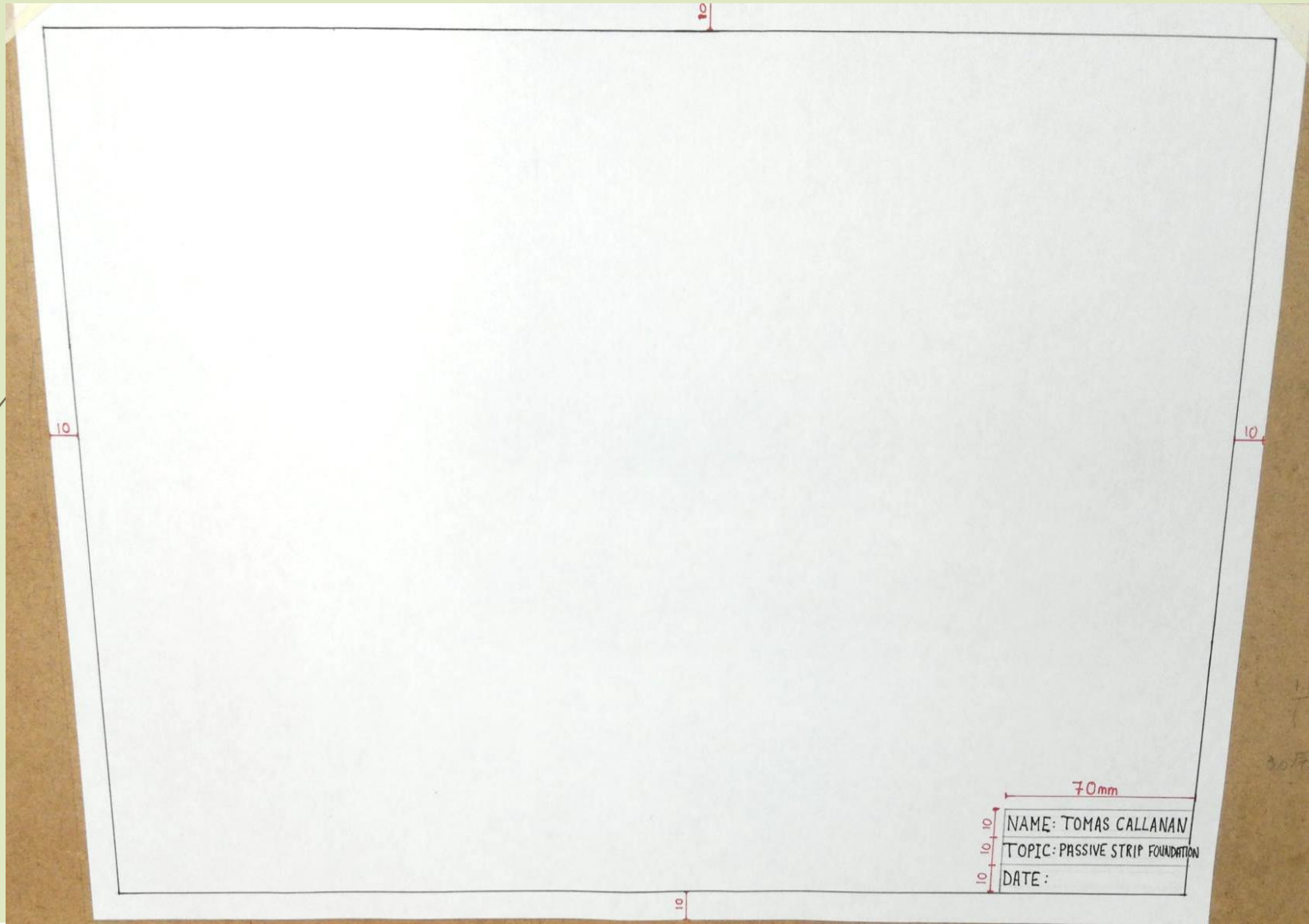


# Construction Detail Drawing

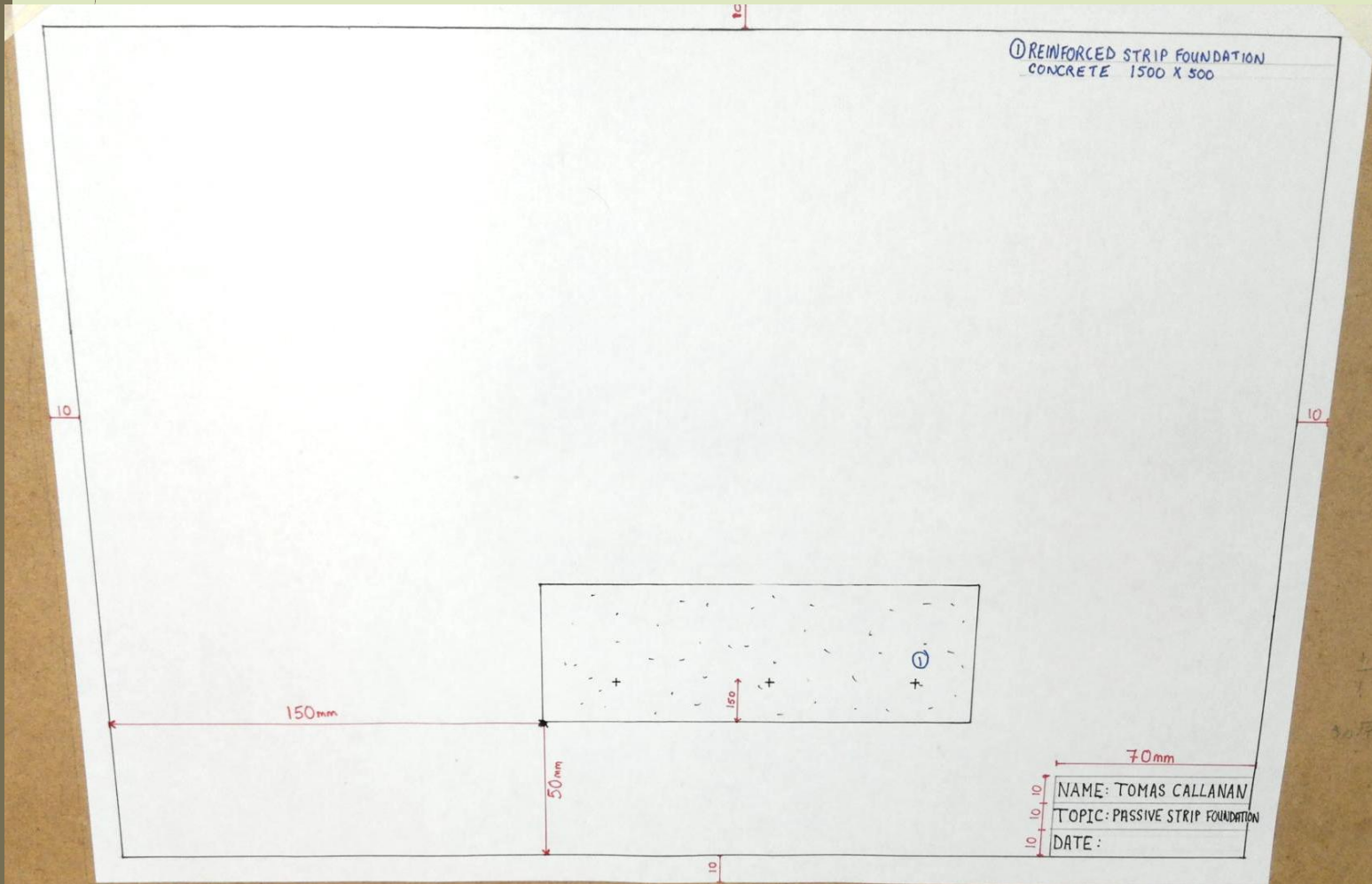
## Passive Concrete Cavity Wall with an Insulated Concrete Floor and Strip Foundation

Key skills needed for Mandatory Exam Paper Question 1!!!

# Begin with similar set up: Border and Text Box



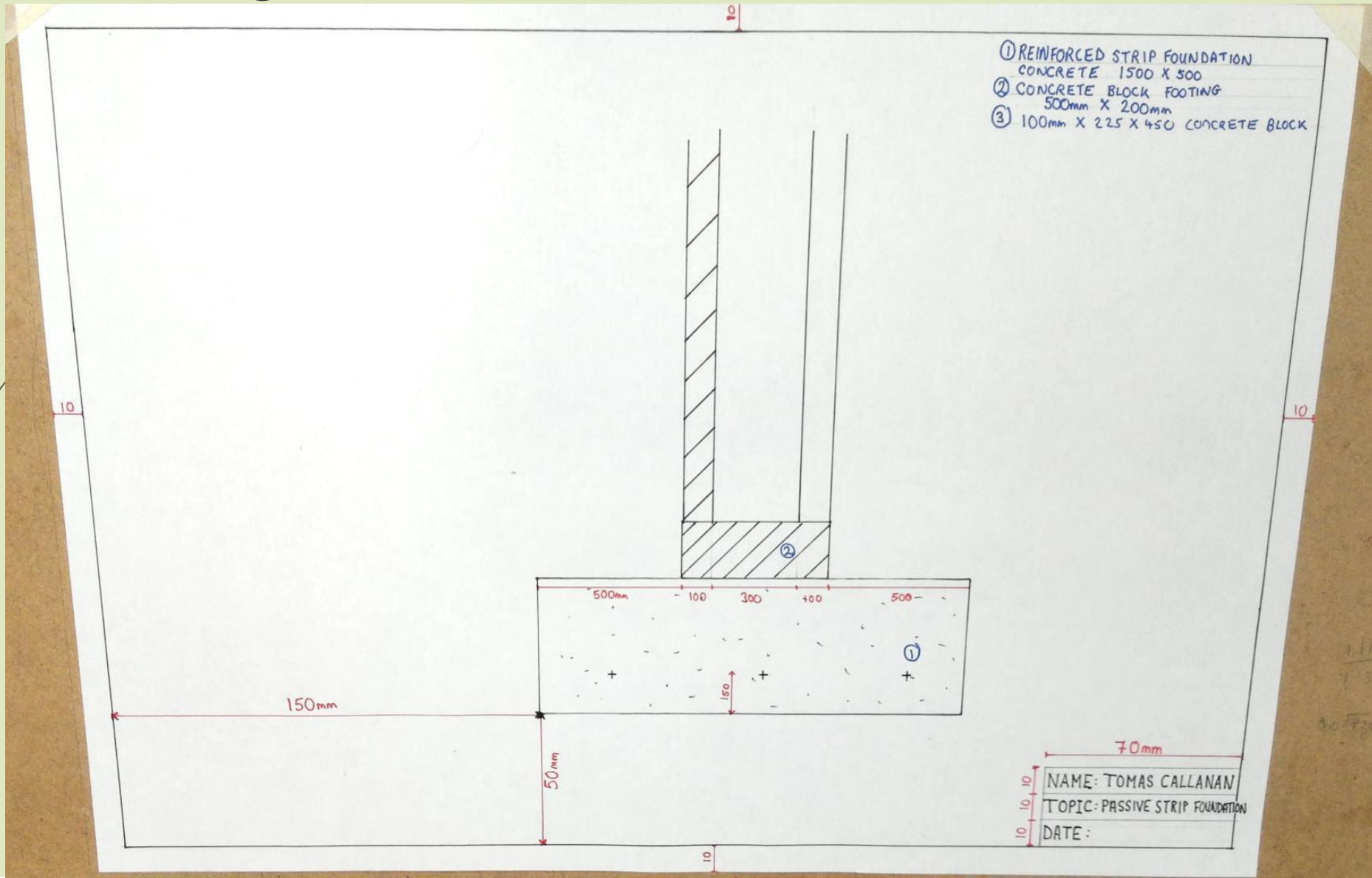
# First steps



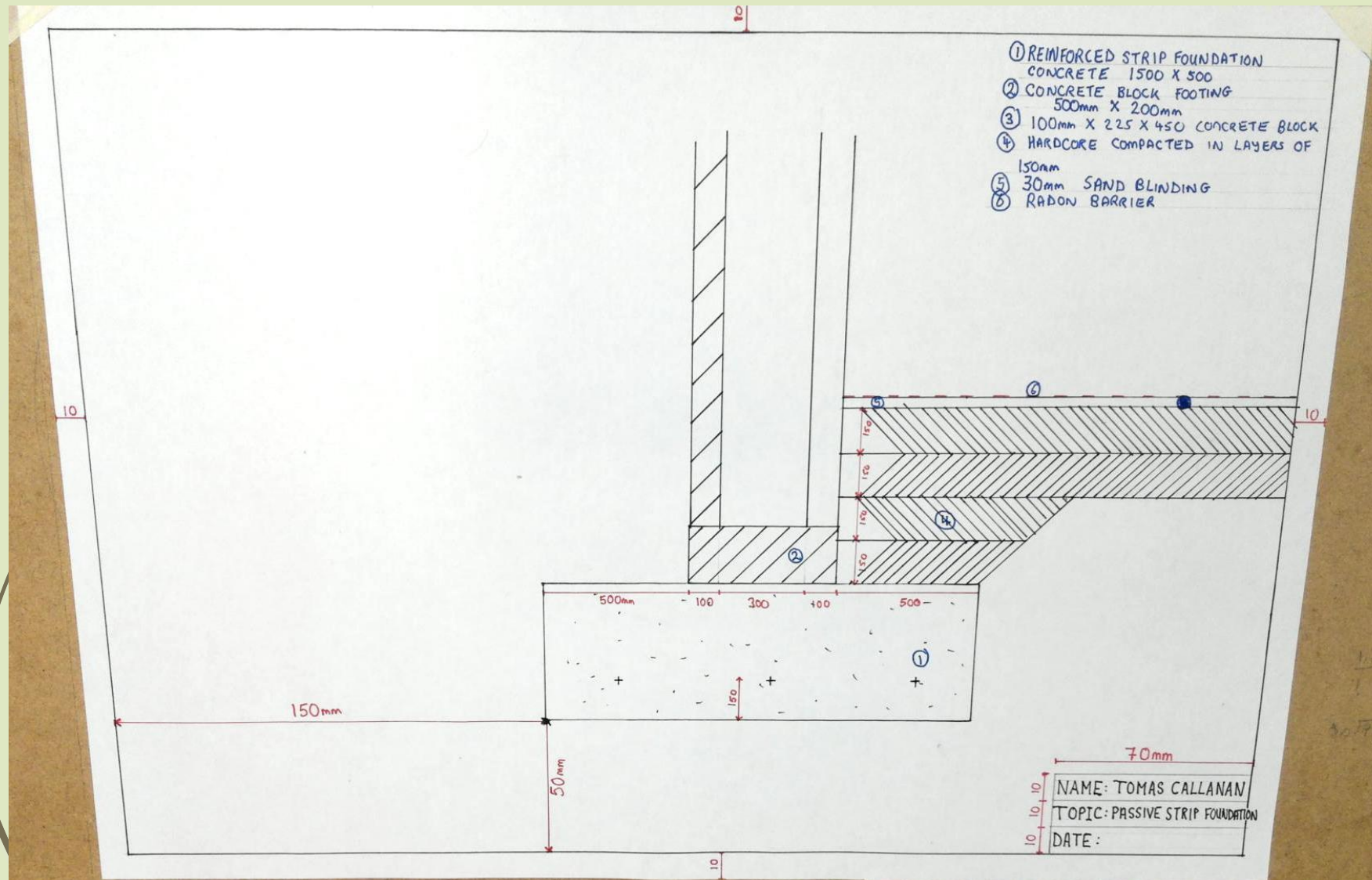
## Step 2

1. Drawing is to scale **1:10**, so ensure every measurement you use has been scaled down ie Strip Foundation is 1500 x 500 so remember to scale it down by 10. The measurement you will draw will be **150 x 50**
2. Start your drawing from the left hand side by measuring across 150mm and up 50mm
3. Start to draw your foundation 1500 by 500, make sure you put in the actual sizes in the annotation as shown

# Adding Concrete Cavity External Walls



# Adding Hardcore and Sand



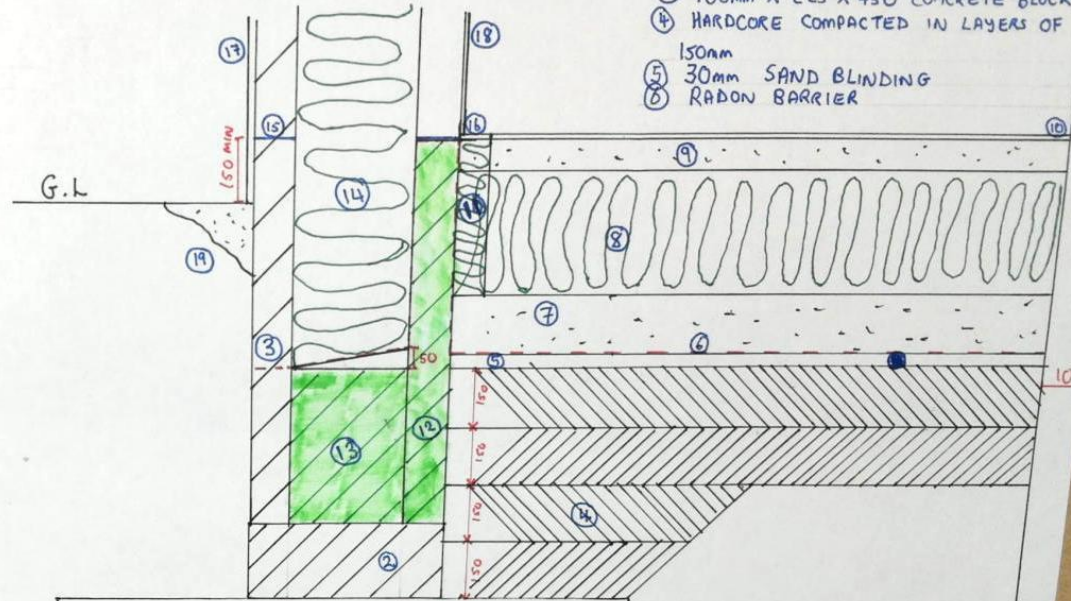




# Final Details

- ⑦ 150mm CONCRETE SUBFLOOR
- ⑧ 300mm FOILED BACK RIGID INSULATION
- ⑨ 75mm CONCRETE SCREED
- ⑩ 12mm CERAMIC TILE
- ⑪ 80mm EDGE INSULATION
- ⑫ THERMAL BLOCK RISING
- ⑬ THERMAL BLOCK CAVITY INFILL
- ⑭ 300mm QUILTED INSULATION
- ⑮ DAMP PROOF COURSE (D.P.C.)
- ⑯ AIRTIGHTNESS TAPE
- ⑰ 19mm EXTERNAL RENDER
- ⑱ 12mm INTERNAL RENDER
- ⑲ TOPSOIL

- ① REINFORCED STRIP FOUNDATION  
CONCRETE 1500 X 500
- ② CONCRETE BLOCK FOOTING  
500mm X 200mm
- ③ 100mm X 225 X 450 CONCRETE BLOCK
- ④ HARDCORE COMPACTED IN LAYERS OF  
150mm
- ⑤ 30mm SAND BLINDING
- ⑥ RADON BARRIER



70mm

NAME: TOMAS CALLANAN
TOPIC: PASSIVE STRIP FOUNDATION
DATE:

