



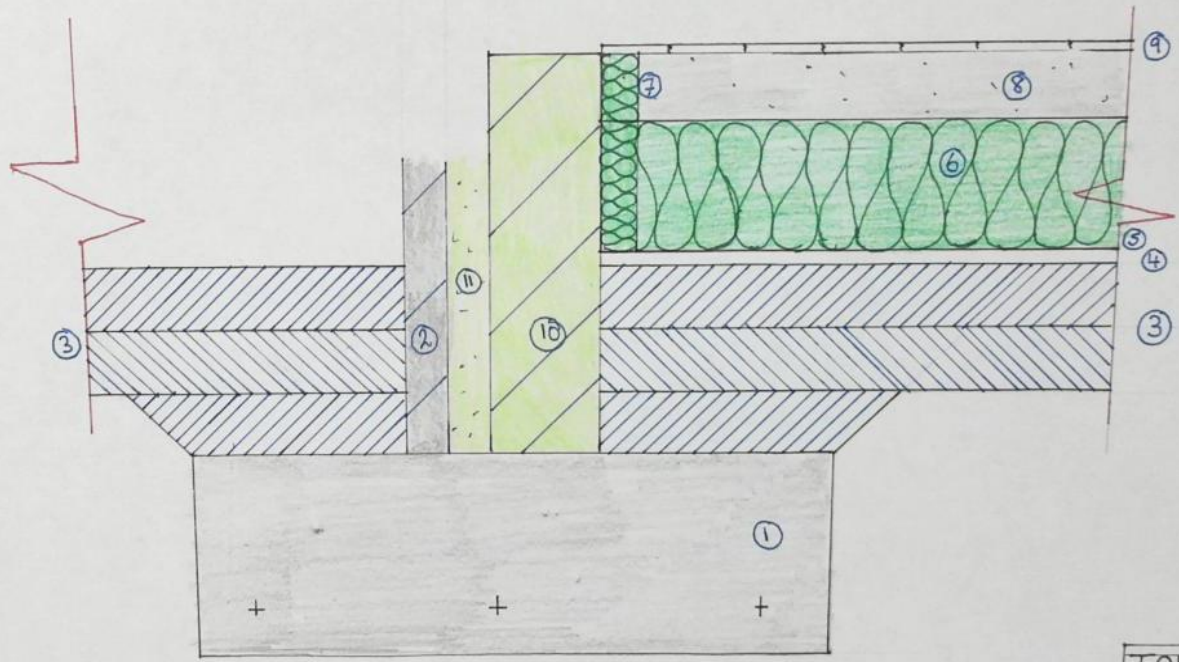
Construction Detail Drawing

Passive Timber Frame Wall with a Full High Performance Door Detail

Key skills needed for Mandatory Exam Paper Question 1!!!

Passive Timber Frame Door Detail Scale 1:10

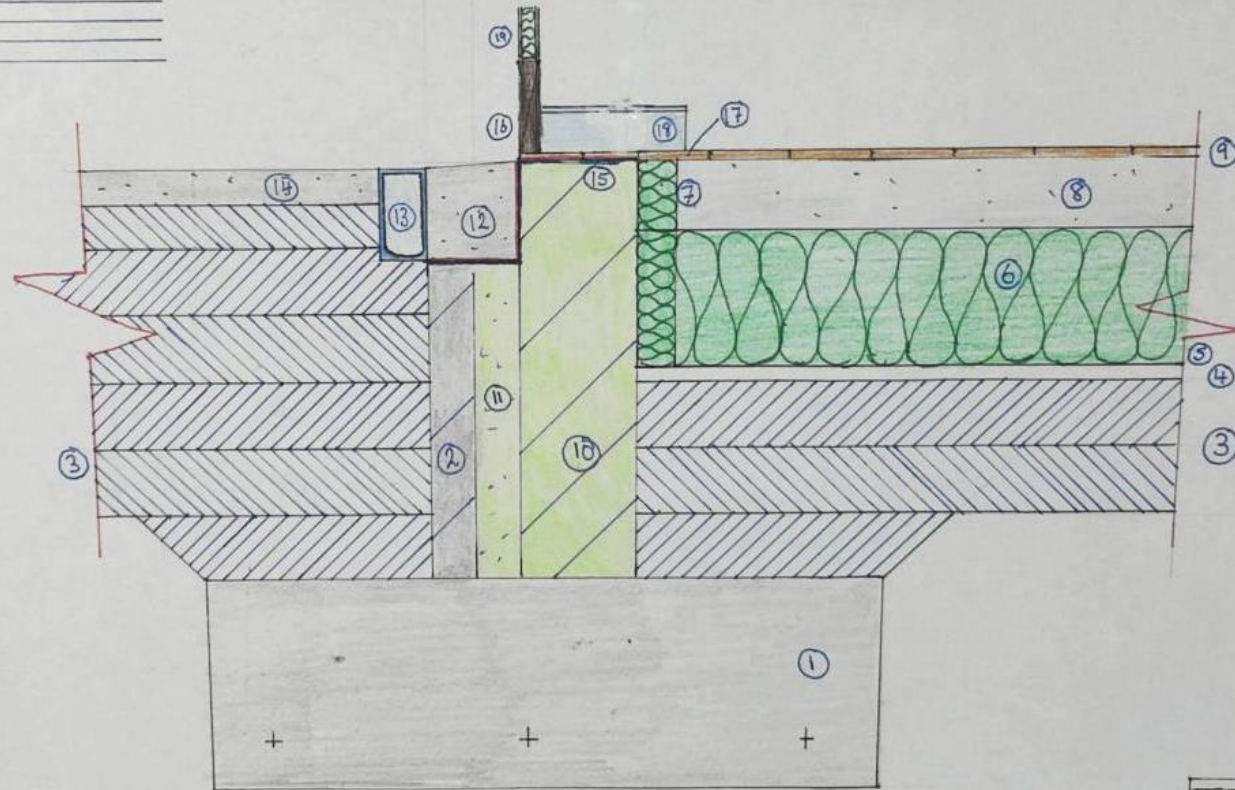
- ① 1500 X 500 REINFORCED STRIP FOUNDATION
- ② 100 X 225 X 450 CONCRETE BLOCK
- ③ NADDOLE COMPACTED IN 150mm LAYERS
- ④ 30mm SAND BLINDING
- ⑤ RADON BARRIER
- ⑥ 800mm QUILTED INSULATION
- ⑦ 80mm EDGE INSULATION
- ⑧ 150mm CONCRETE FLOOR
- ⑨ 25mm TYG FLOORBOARDS
- ⑩ 250 X 225 THERMAL BLOCK RING WALL
- ⑪ CAVITY INFILL (THERMAL)



TOMAS CALLANAN
TOPIC:
DATE:

Passive Timber Frame Door Detail Scale 1:10

- ① 1500 X 500 REINFORCED STRIP FOUNDATION
- ② 100 X 225 X 450 CONCRETE BLOCK
- ③ MAKEUP COMPACTED IN 150mm LAYERS
- ④ 30mm SAND BLINDING
- ⑤ RADON BARRIER
- ⑥ 900mm QUILTED INSULATION
- ⑦ 80mm EDGE INSULATION
- ⑧ 150mm CONCRETE FLOOR
- ⑨ 25mm TYG FLOORBOARDS
- ⑩ 250 X 225 THERMAL BRIDGE WALL
- ⑪ CAVITY INFILL (THERMAL)
- ⑫ CAST IN SITU CONCRETE THRESHOLD 215 X 200 15° SLOPE
- ⑬ GALVANISED STEEL GULLY 215 X 100
- ⑭ 75mm CONCRETE FOOTPATH
- ⑮ DPC WRAPPED AROUND THRESHOLD
- ⑯ 195 X 45 BOTTOM RAIL
- ⑰ DOOR SADDLE
- ⑱ 100 X 19 SKIRTING BOARD
- ⑲ 10mm CLADDING

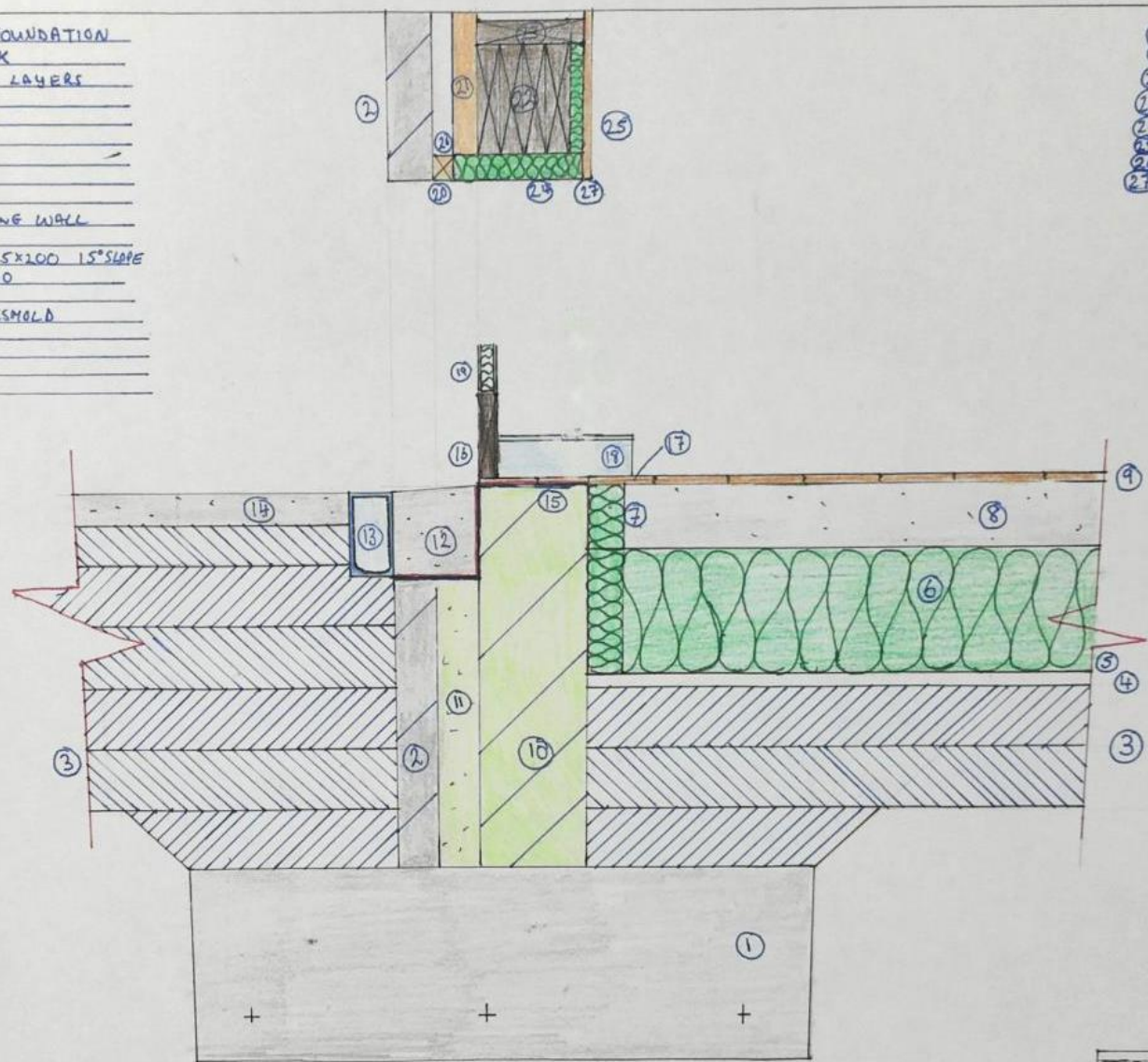


TOMAS CALLANAN
TOPIC:
DATE:

Passive Timber Frame Door Detail Scale 1:10

- 1 1500 X 500 REINFORCED STRIP FOUNDATION
- 2 100 X 225 X 450 CONCRETE BLOCK
- 3 NARROWLY COMPACTED IN 150mm LAYERS
- 4 30mm SAND BLINDING
- 5 RADON BARRIER
- 6 800mm QUILTED INSULATION
- 7 80mm EDGE INSULATION
- 8 150mm CONCRETE FLOOR
- 9 25mm T&G FLOORBOARDS
- 10 250 X 225 THERMAL BLOCK RUING WALL
- 11 CAVITY INFILL (THERMAL)
- 12 CAST-IN-SITU CONCRETE THRESHOLD 215X200 15°SLOPE
- 13 GALVANISED STEEL GULLY 215X100
- 14 75mm CONCRETE FOOTPATH
- 15 DPC WRAPPED AROUND THRESHOLD
- 16 195X45 BOTTOM RAIL
- 17 DOOR SADDLE
- 18 100 X 19 SKIRTING BOARD
- 19 10mm CLADDING

- DOOR LINTEL COMPONENTS**
- 20 CAVITY CLOSER
 - 21 WOODFIARE BOARD 50mm
 - 22 TIMBER LINTEL 230X50 (4)
 - 23 TOP RAIL 230 X 50
 - 24 50mm CAVITY CLOSER
 - 25 19mm OSB BOARD
 - 26 BREATHER MEMBRANE
 - 27 VAPOUR CHECK

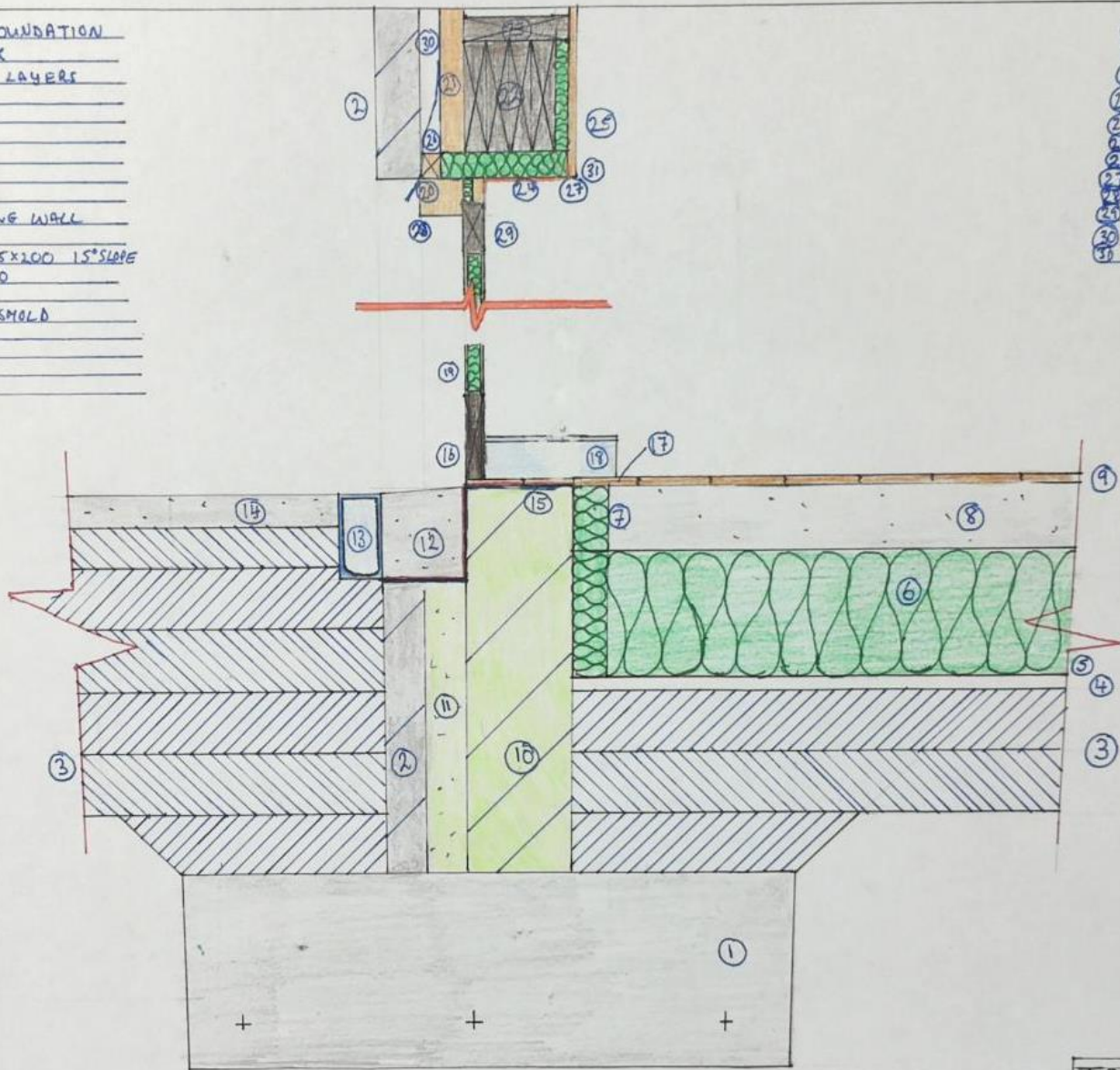


TOMAS CALLANAN
 TOPIC:
 DATE:

Passive Timber Frame Door Detail Scale 1:10

- 1 1500 X 500 REINFORCED STRIP FOUNDATION
- 2 100 X 225 X 450 CONCRETE BLOCK
- 3 HARDWARE COMPACTED IN 150mm LAYERS
- 4 30mm SAND BLINDING
- 5 RADON BARRIER
- 6 800mm QUILTED INSULATION
- 7 80mm EDGE INSULATION
- 8 150mm CONCRETE FLOOR
- 9 25mm T&G FLOORBOARDS
- 10 250 X 225 THERMAL BLOCK RIVING WALL
- 11 CAVITY INFILL (THERMAL)
- 12 CAST IN SITU CONCRETE THRESHOLD 215 X 200 15° SLOPE
- 13 GALVANISED STEEL GULLY 215 X 100
- 14 75mm CONCRETE FOOTPATH
- 15 DPC WRAPPED AROUND THRESHOLD
- 16 135 X 45 BOTTOM RAIL
- 17 DOOR SADDLE
- 18 100 X 19 SKIRTING BOARD
- 19 10mm CLADDING

- DOOR LINTEL COMPONENTS
- 20 CAVITY CLOSER
 - 21 WOODFIARE BOARD 50mm
 - 22 TIMBER LINTEL 230 X 50 (4)
 - 23 TOP RAIL 230 X 50
 - 24 50mm CAVITY CLOSER
 - 25 19mm OSB BOARD
 - 26 BREATHER MEMBRANE
 - 27 VAPOUR CHECK
 - 28 150mm X 90 DOOR FRAME
 - 29 95mm X 45 DOOR HEAD
 - 30 STEPPED DPC
 - 31 AIR TIGHTNESS TAPE



TOMAS CALLANAN
TOPIC: