

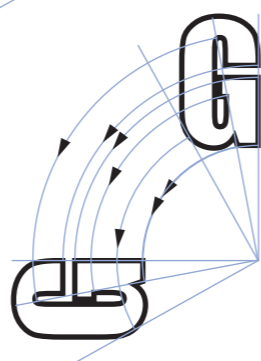
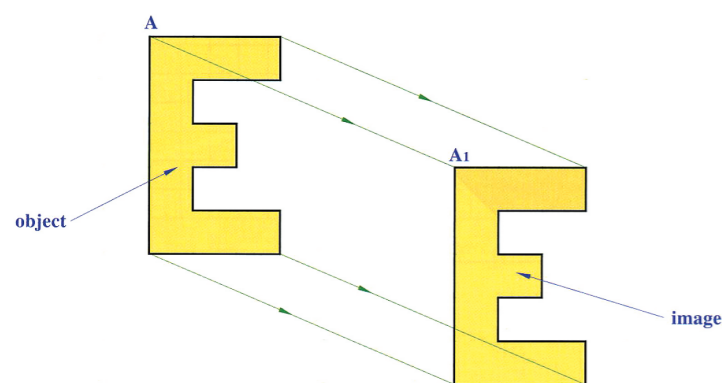
Transformation Geometry



TRANSLATIONS

Translations is the movement of a set of points:

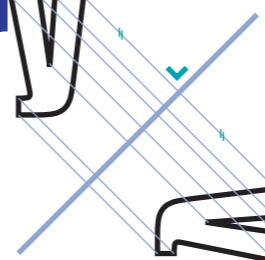
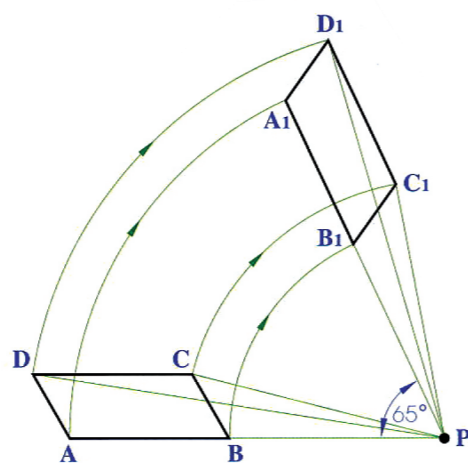
- The same direction (parallel)
- The same distance



ROTATIONS

Rotations is the turning of a set of points:

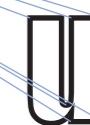
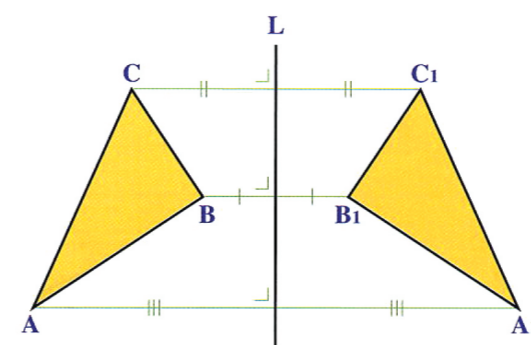
- About a fixed point
- Through a given number of degrees



AXIAL SYMMETRY

Axial Symmetry is the mirror image of a set of points

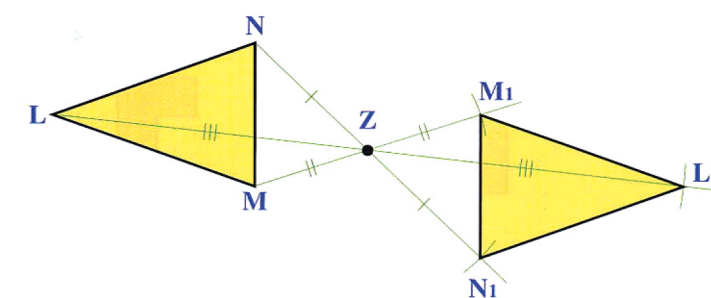
- A point and its image are equidistant from the axis of reflection
- The line between a point and its image and the axis of reflection is 90 degrees



CENTRAL SYMMETRY

Central Symmetry is the image of a set of points:

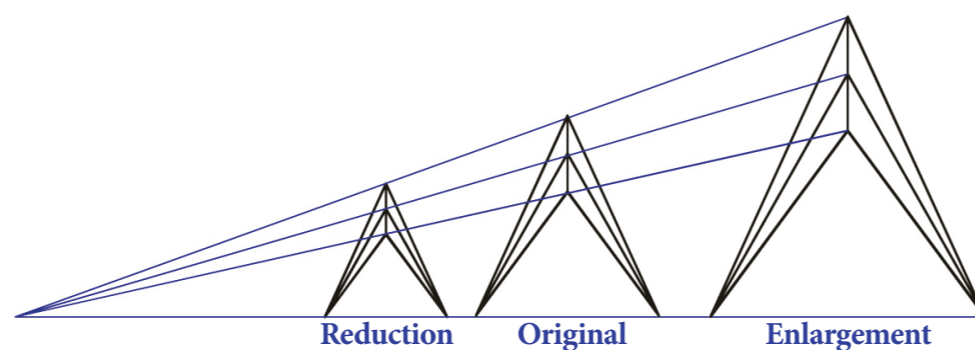
- Through a point
- Equal distance away from the original



ENLARGEMENTS & REDUCTIONS

Under enlargements a figure:

- Changes in size but not in shape
- Is mapped onto a similar figure and a line is mapped onto a parallel line



PARALLEL PROJECTION

Parallel Projection is the movement of a set of points:

- Onto a line parallel to a given line

