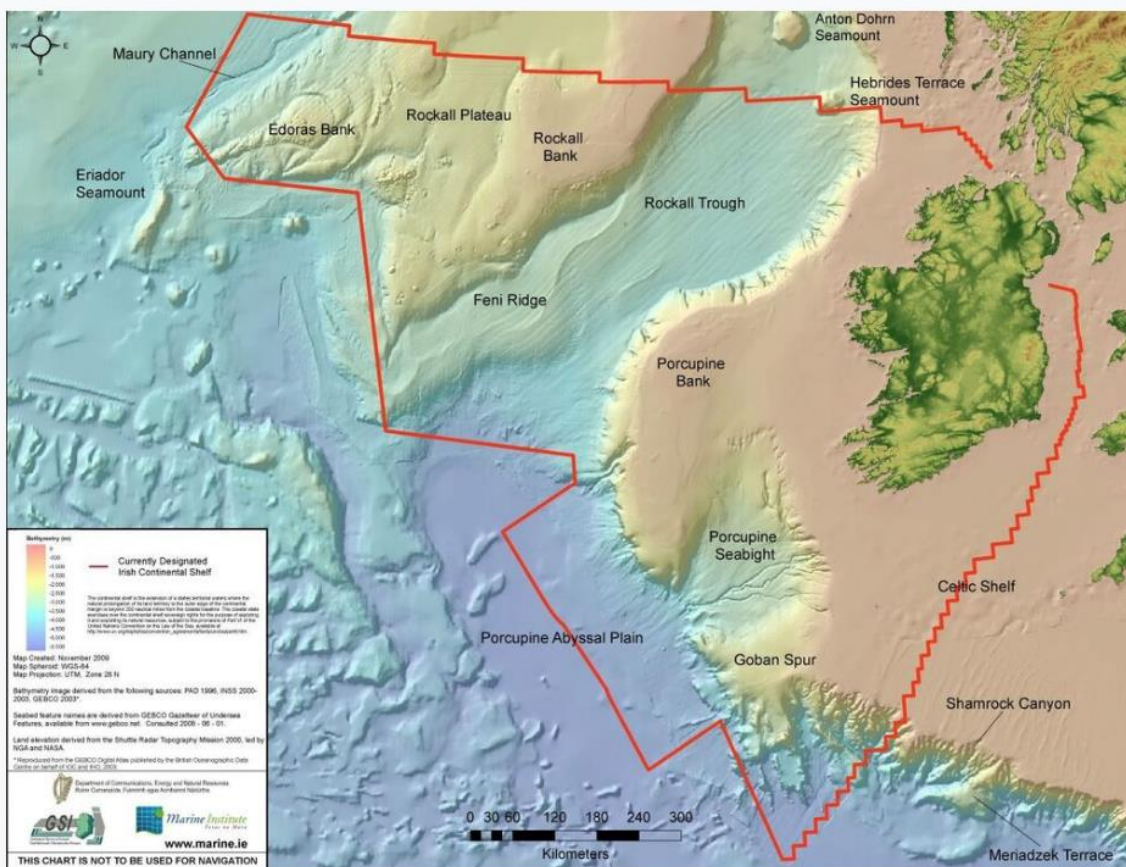


The Real Map of Ireland Sketch Map Activity



1. Draw a sketch map of the Real Map of Ireland above. Don't forget to draw your sketch map the same shape, add a title, and guide lines (either diamond or nine squares) and also include a key or legend to explain the features that you need to add below. Add the following items to your sketch map:
 - The extent of the Irish Continental Shelf
 - The landmass of Ireland
 - Areas of shallower sea
 - One named area of sea bed
 - From your study of physical geography one area of gas exploration off the coast of Ireland
 - Mark with a 'X' on the landmass of Ireland the place where you are living
2. Define the term continental shelf.
3. Give three reasons why the work of INFOMAR is very important and why we need to create such detailed maps of the seabed off the coast of Ireland?