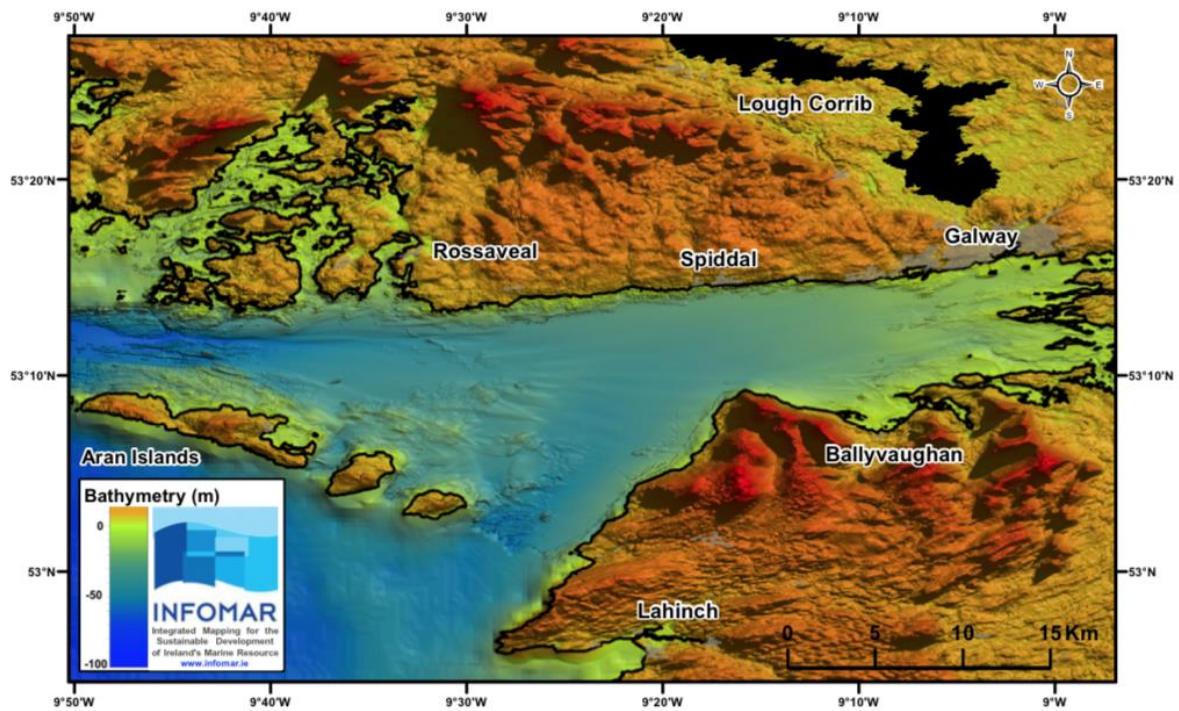
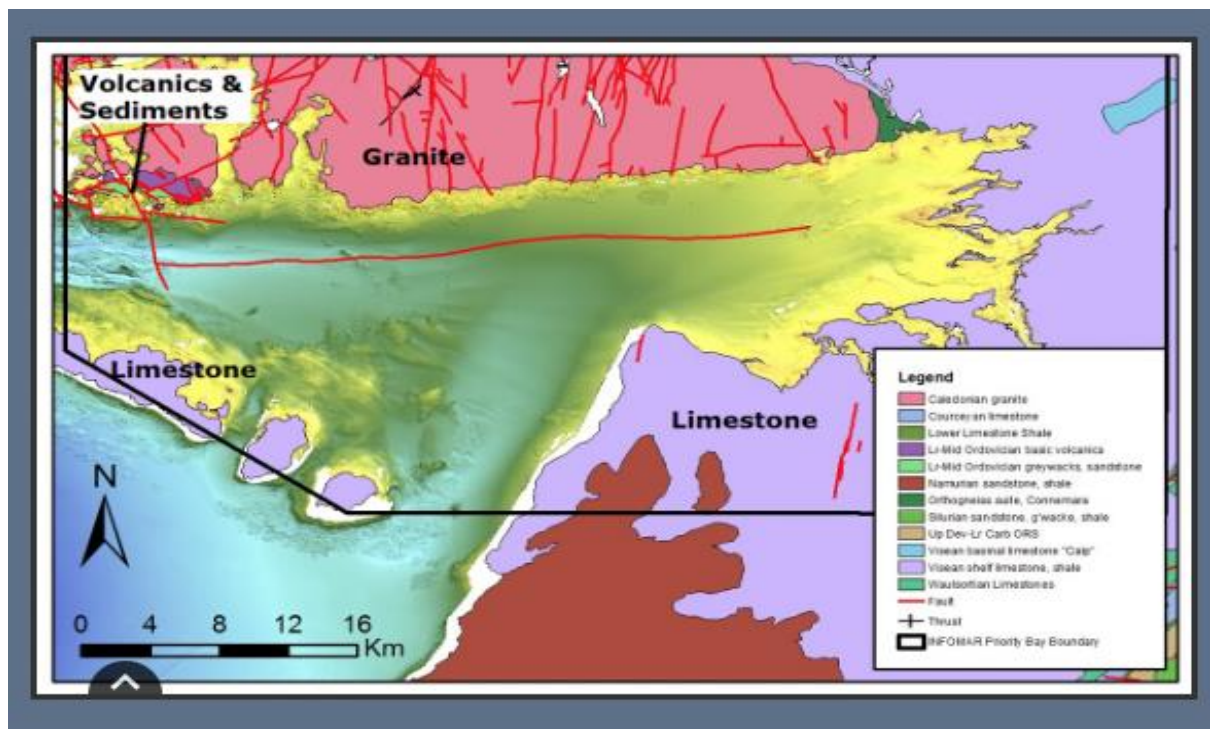


Galway Bay beneath the waves worksheet

The 3D Map of Galway Bay



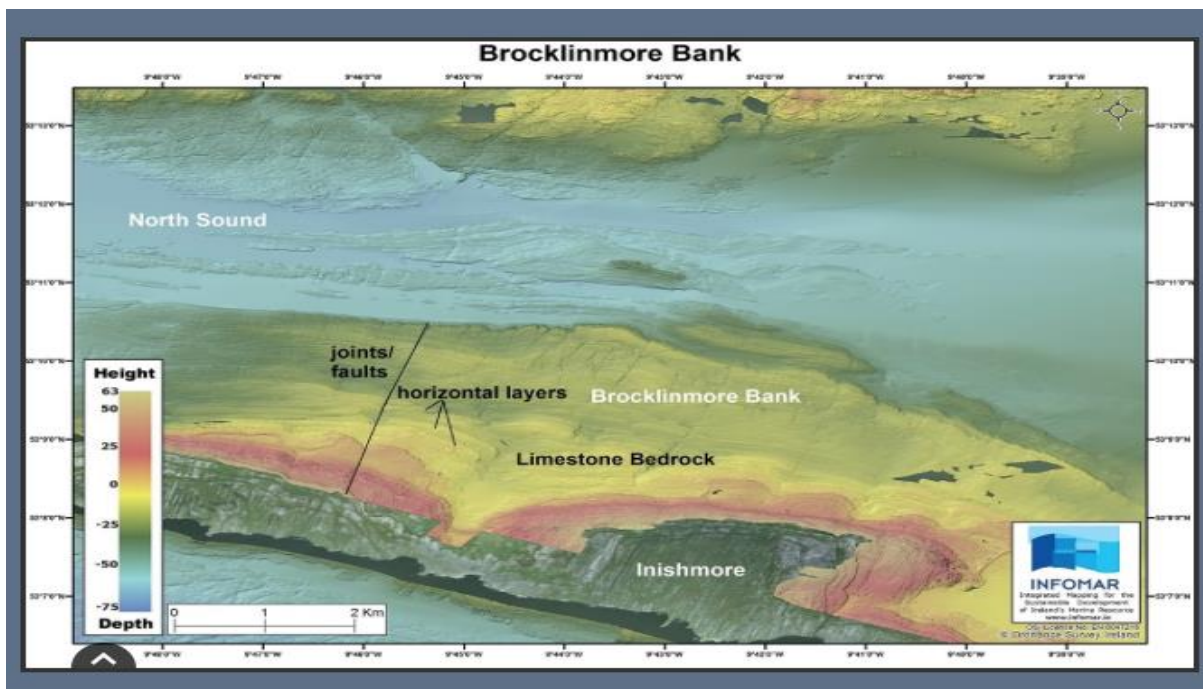
3D view of Galway Bay and the Aran Islands. This large hydrographic and geophysical survey was carried out by _____ between 2006 and 2014.

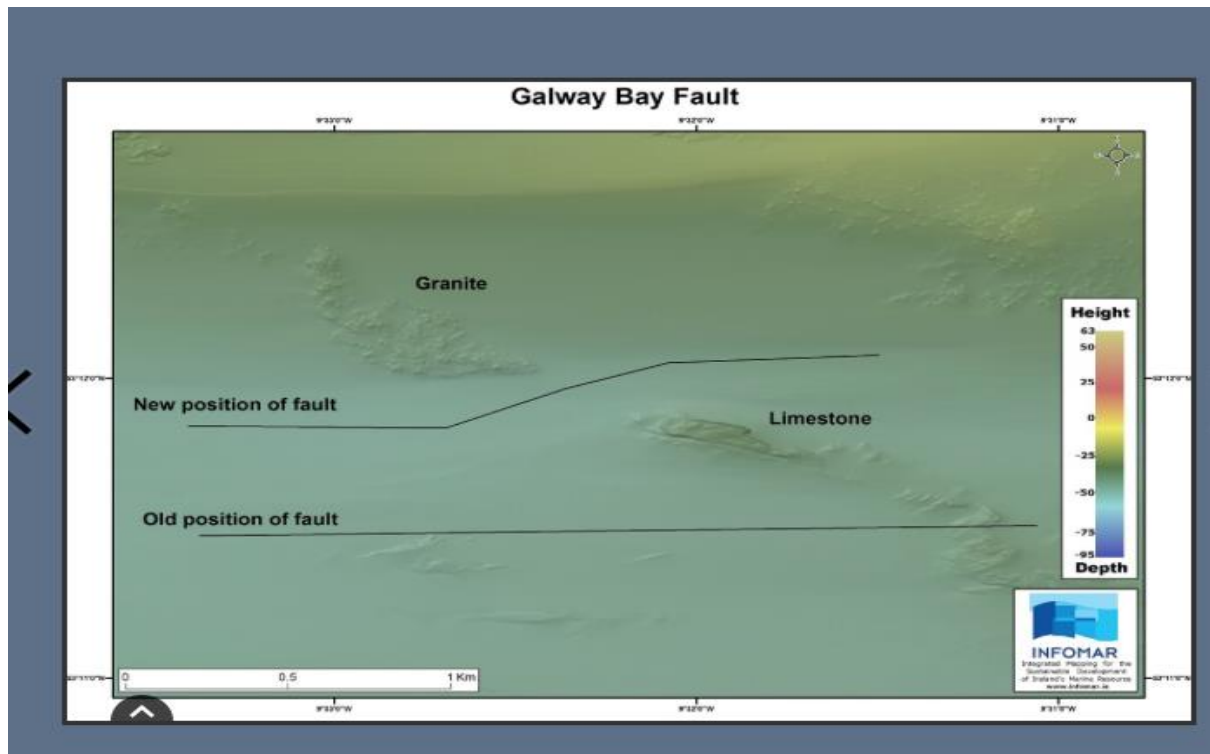


The _____ of Galway Bay

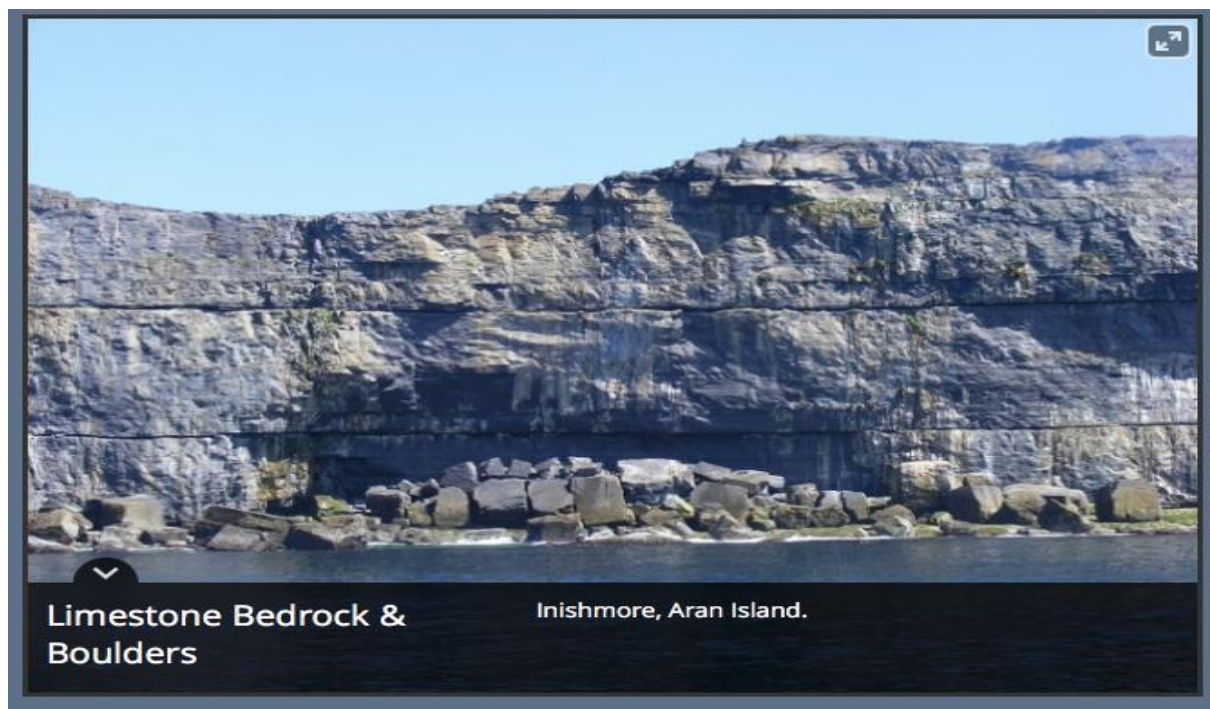


A more familiar map of Galway Bay. Here we will take a closer look at what lies off the coast of Inis Mór the largest of the _____ Islands. This is marked as number 11 on the map extract above. The area is referred to as Brocklinmore Bank and is a shallow area of water that shows horizontal layers of rock with a jointed appearance. This would suggest that they are areas of Carboniferous _____. Examples of fault lines can also be seen in the map of Brocklinmore Bank. This is where a break in the _____ strata has occurred.



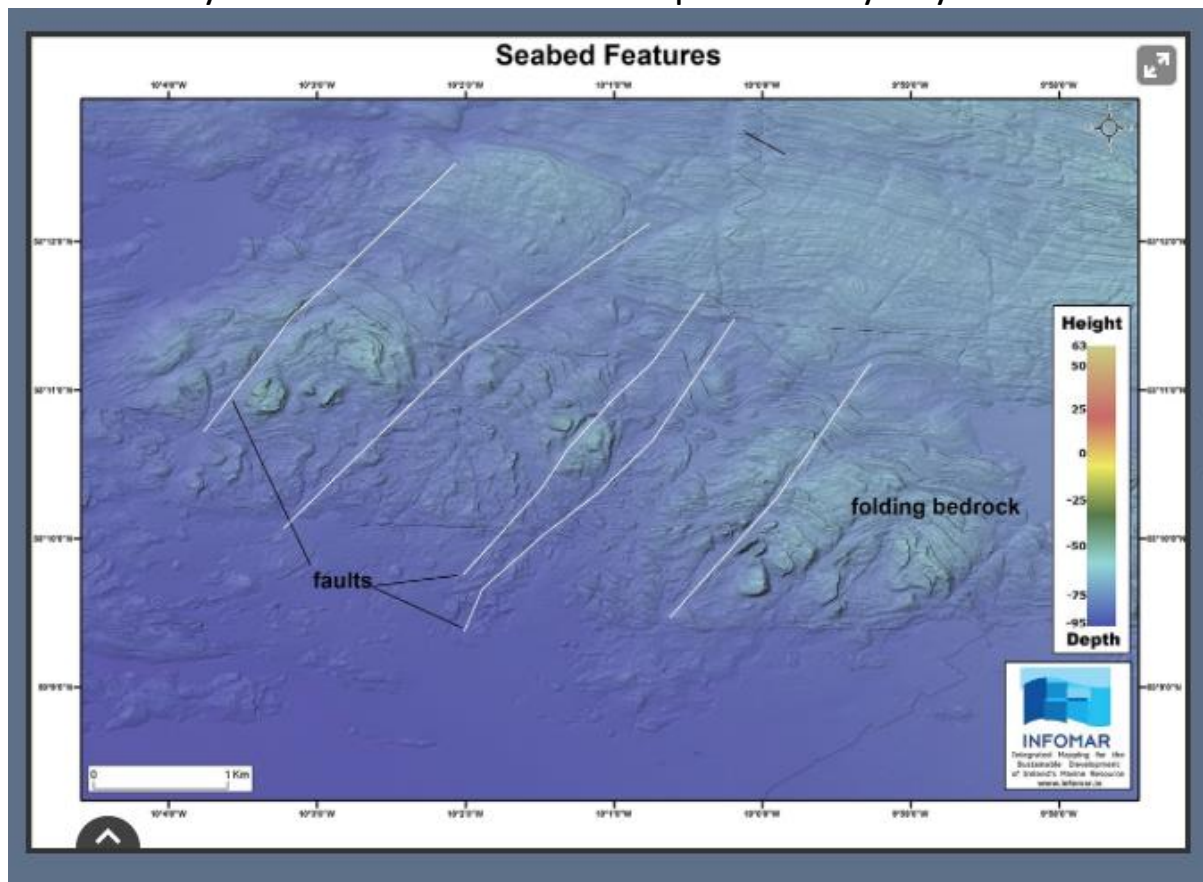


This map shows the position of a _____ line in the bedrock of the coastal area examined. It shows how its position has moved from where it was located on older maps. This shows the importance of having more up to date maps and mapping techniques.



Above is an example of the faulted rock face of the _____ on Inis Mór, Aran Islands.

Here is an example of a series of fault lines that are evident on the bedrock of the sea floor off the _____ of Galway Bay. It is indicated by the number 16 on the map of Galway Bay above.



Fill in the missing words in the text above from the word list below:

Limestone	Bedrock	Coast
INFOMAR	Fault	Aran
Cliffs	Rock	

For more information see:

<https://infomargis.maps.arcgis.com/apps/MapTour/index.html?appid=24ee88c09635487aa53d33ea73911bfd>

All images created by INFOMAR:



scoilnet