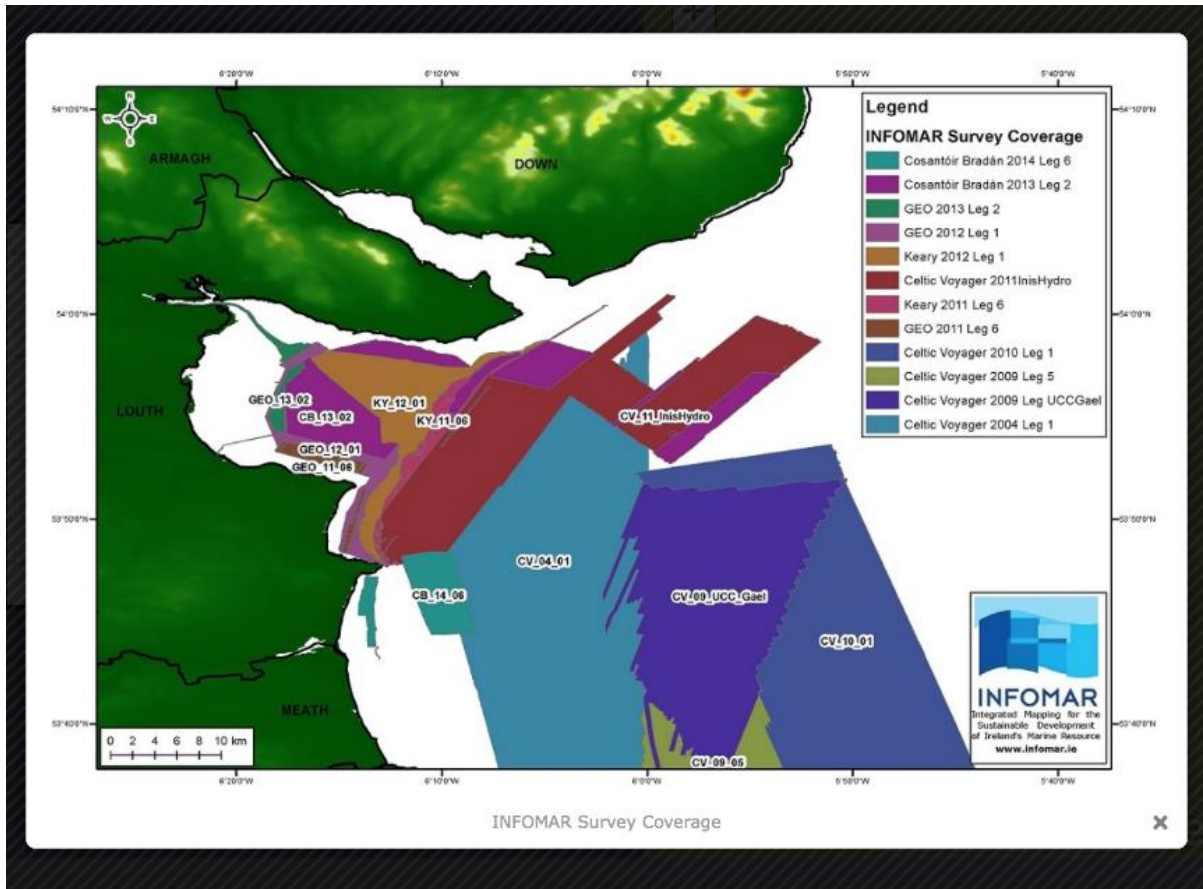
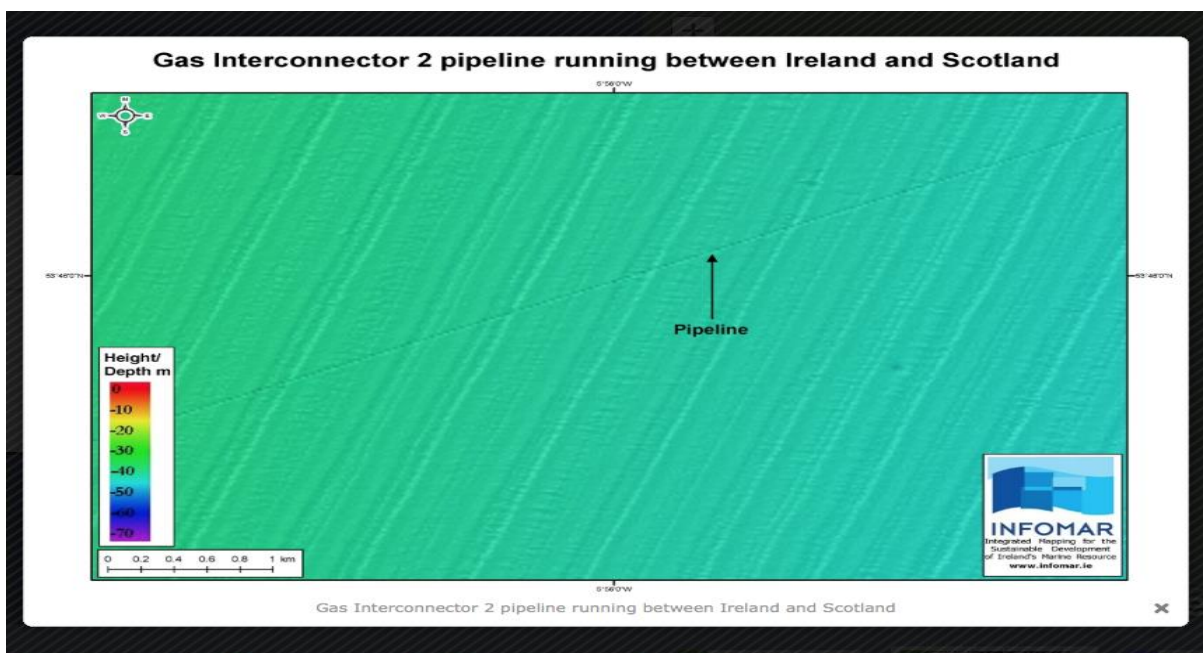


Louth and Meath beneath the waves worksheet



3D view of _____ and Meath. This large hydrographic and geophysical survey was carried out by INFOMAR between 2004 and 2015.



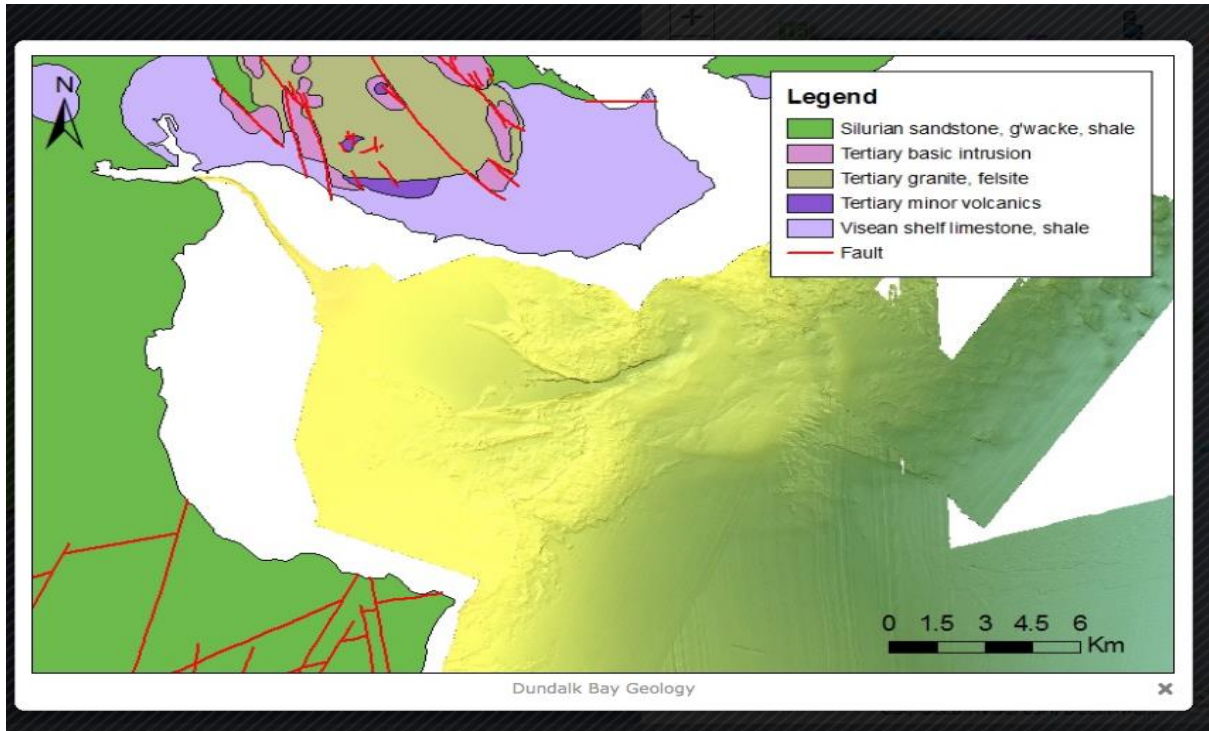
The gas pipeline in the above image was completed in 2002 and brings gas ashore at Gormanstown in Co. Meath. In the image below it is shown as number 11 on the map.



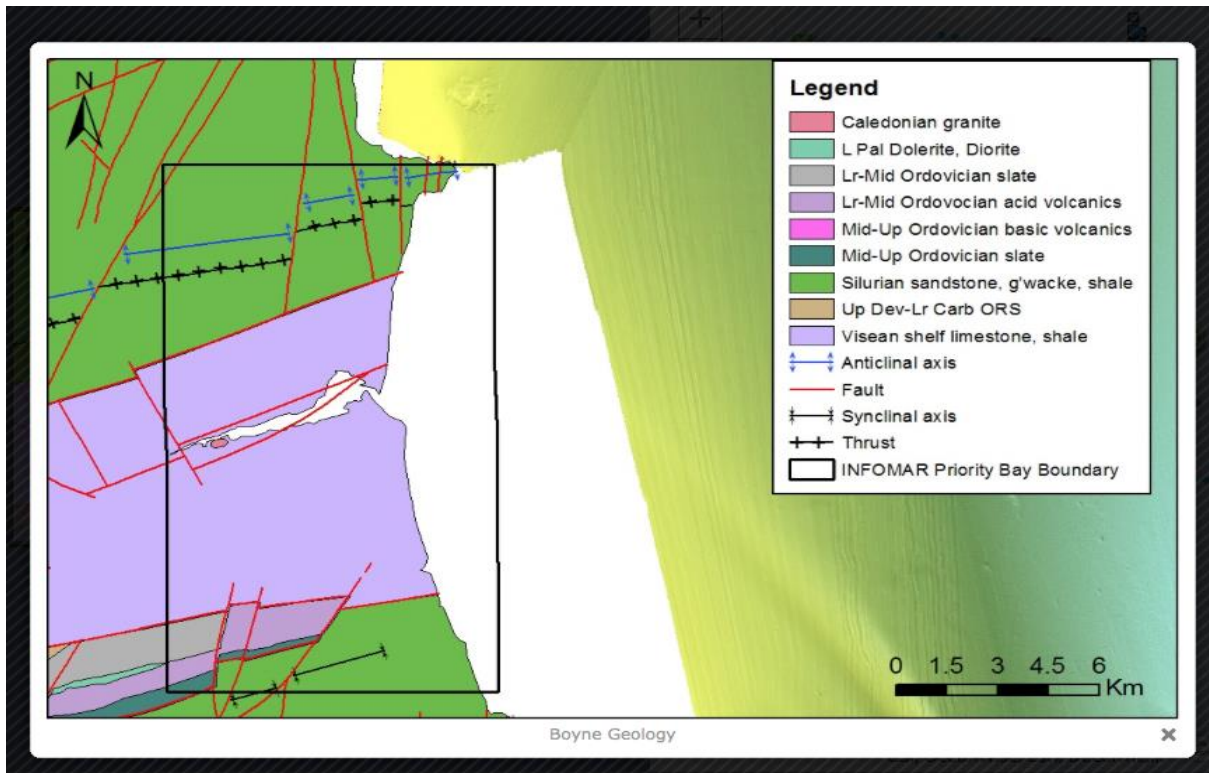
This 200km subsea _____ can be used to supplement the Irish gas supplies to Ireland in times of need. It also acts as a storage facility for our gas.



This map extract below shows the _____ or bedrock of Dundalk Bay in Co. Louth. It is mainly sedimentary rocks, sandstone and shale laid down during the Carboniferous period. Sandstone rock was laid down when Ireland was located closer to the equator and was once a _____. The sands were washed into the sea and compressed together to form sandstone.



In the map extract below the _____ rock granite is to the north and forms the Mourne mountain. These are harder rocks and more difficult to _____ therefore stand out as mountains in this region. Granite is created when magma cools slowly within the earth's crust.



The image above is of the geology of the Boyne valley in Co. Meath. Once again the area is dominated by _____ rocks but this time mainly limestones and shales. Limestone was laid down when the landmass of Ireland was below sea level. It formed from the remains of _____ that were compressed together. On either side of the Boyne valley there are fault lines indicated by red lines on the above image. These were created by _____ processes in the area as the land was compressed together. The fault lines could be the reason that the inlet was created at this point as the fractured rock was more easily eroded by both fluvial and marine processes.

Fill in the missing words in the text above from the word list below:

Igneous	Sea creatures	Bedrock
Desert	Interconnector	Erode
Sedimentary	Tectonic	Louth

For more information see:

<https://infomargis.maps.arcgis.com/apps/MapTour/index.html?appid=a5fee3c7000f46fba59ff5f8e29c2d5f>

<https://www.gasnetworks.ie/corporate/company/our-network/18048-GNI-GasNetwork-ReliabilityCapacity-Doc-Update.pdf>

All images created by INFOMAR:



scoilnet