

### Relevant and Original

- Is the topic relevant to the brief?
- Does it link to an agricultural enterprise?
- Is it an area that you are interested in?
- Does it focus on a gap in existing knowledge?

### Complex and Arguable

- Cannot simply be answered with Yes / No leaving little scope for investigation / discussion
- Cannot be answered with readily available facts / figures
- Provides scope for discussion and interpretation of results

### Focused

- Focuses on a single topic / problem
- Is answerable using primary data (quantitative / qualitative)

# Research Questions

- Research is about informing, not instructing
- Research aims to improve understanding and suggest possibilities (rather than ready made solutions)

### Safety

Can primary data be collected safely in the laboratory and / or field settings which support the formation of a conclusion?

### Researchable

Have you conducted background research which allows for a number of viewpoints to be explored?

Can the research question be investigated by conducting a controlled experiment while you follow the scientific method?

### Feasible and Specific

- Can the research question be carried out over an appropriate period of time (e.g. a season of production) in laboratory and / or field setting?
- Have you enough resources?

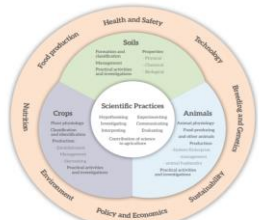


Figure 6: Structure of the specification