

Animal Digestion Revision Questions

1. Which of the following parts of the ruminant digestive system is heavily folded:

a. The rumen	
b. The reticulum	
c. The omasum	
d. The abomasum	

2. What part of a ruminant digestive system is most like the monogastric stomach?

a. The rumen	
b. The reticulum	
c. The omasum	
d. The abomasum	

3. Which of the following enzymes is responsible for the digestion of protein?

a. Amylase	
b. Lipase	
c. Trypsin	
d. Maltase	

4. Which of the following parts of the ruminant digestive system is responsible for the regurgitation of partially digested food for further chewing?

a. The rumen	
b. The reticulum	
c. The omasum	
d. The abomasum	

5. Where is bile produced?

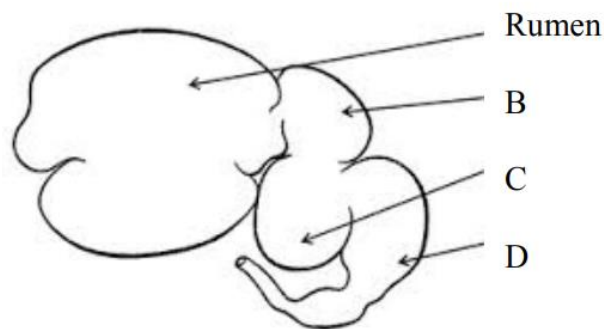
a. The liver	
b. The pancreas	
c. The duodenum	
d. The rumen	

6. Distinguish between the dental formulas for a ruminant animal e.g. sheep and a pig.

7. Distinguish between the omasum and the abomasum.

8. State three functions of the liver.

9. The ruminant stomach is shown in the diagram below.



a. Name the chambers of the stomach labelled B, C and D.

B	
C	
D	

b. Name the main constituent of grass that is digested by the ruminant stomach.

c. Food is regurgitated from chamber B. how does this benefit the farm animal?

d. Which part of the digestive system does food enter when it leaves part D?

10. Describe the digestion of cellulose in a ruminant animal.