



Using AI to Create Ruberics





BREAKING DOWN PCLM



A guide to leveraging AI to streamline marking by:

- Transforming PCLM into easy to read tables
- Creating student-friendly versions for use in peer and self-assessment





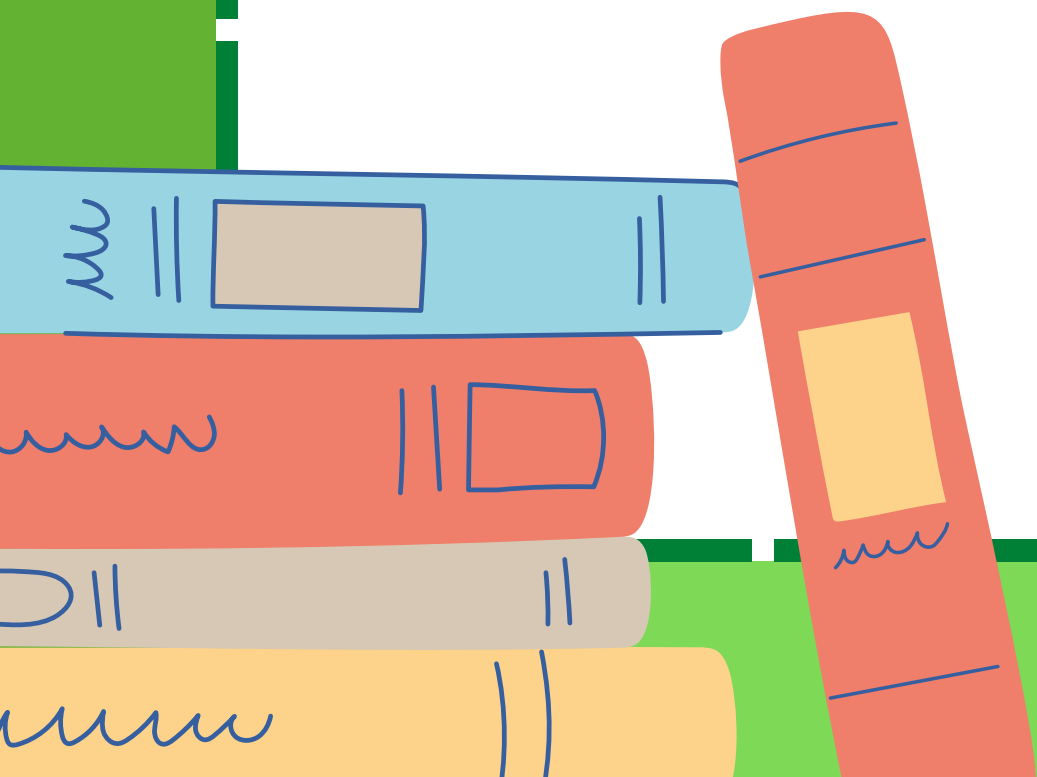
EDUCATE THE AI...

WE WILL USE CHAT GPT

01 Upload a whole marking scheme, a single question mark scheme or the general breakdown of PCLM

02 I prompted the AI to break down the general PCLM format into a range of formats to suit the purpose for which I needed it, e.g table format, student friendly language etc

03 Take a look at the following example of a ruberic table in student-friendly language





EASY-TO-READ PCLM RUBRIC

Criteria	High Score	Mid Score	Low Score
Purpose (30%) Did you answer the question and stay focused?	Fully answers the question, stays focused on the task.	Mostly answers the question, some drift or lack of depth.	Only partially answers the question, loses focus.
Coherence (30%) Does your essay make sense and flow smoothly?	Well-organised, ideas flow clearly from one to the next.	Some good organisation, but transitions are unclear.	Disorganised, ideas are hard to follow.
Language (30%) Did you use effective and varied words?	Language is effective, varied, and engaging.	Language is clear but lacks variety or sophistication.	Language is unclear, with awkward phrasing.
Mechanics (10%) Did you check your spelling, grammar, and punctuation?	8-10 marks: Few, if any, spelling or grammar errors.	5-7 marks: Some errors, but they do not interfere with understanding.	0-4 marks: Many errors that interfere with understanding.



TIPS FOR IMPLEMENTING THE RUBRIC IN CLASS

- Introduce Early: Share the rubric with students early on so they understand how they'll be assessed.
 - Self-Assessment: Encourage students to use the rubric to evaluate their own work before submitting it.
 - Peer-Assessment: Use the rubric in peer-assessment activities in class so students can give constructive feedback to each other.
 - Focus on Improvement: The use of a clear rubric will allow students to see where they need to improve more clearly
- 
- 



OVERALL...



A simple, easy-to-read PCLM rubric makes the marking process clearer for teachers and more understandable for students. It helps ensure that students know what is expected of them and allows teachers to maintain consistency and fairness in their correcting

